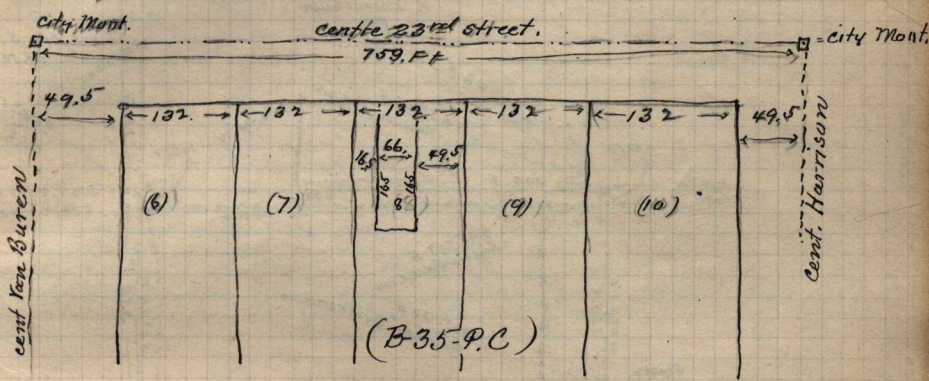


April 4th 1896.

R. 424, Mayor, to J.J. O'born - Lot 8 - B-35 - P.C. O.C.S.

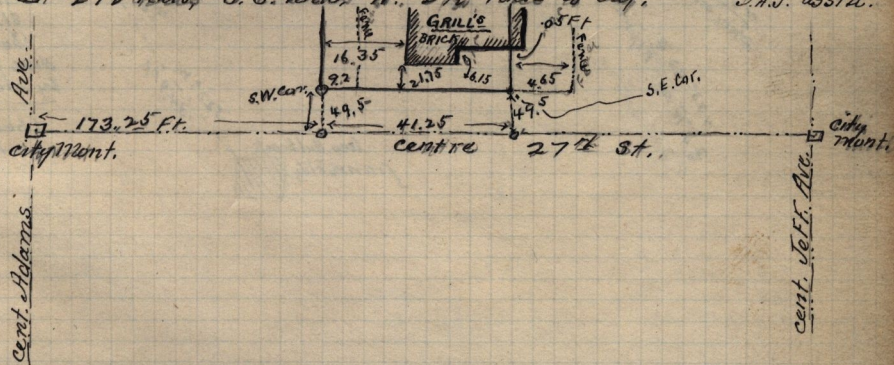
made survey beg. 49.5 ft W. of N.E. cor. lot 8 - B-35 - P.C. W. 4 rods S. 165 ft E. 24 rods N 16 ft ft to beg of Helen O'born.

April 4th 1896.



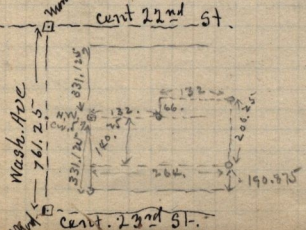
April 6th 1896.

Survey made for R.P. Hunter, Pt. Lot 2-B-13. P.A. O.C.S. Beg. 7 1/2 rods E. of S.W. cor. of said Lot 2. N.B. rods E. 2 1/2 rods, S. 8 rods, W. 2 1/2 rods to beg. J.A.J. asst'd.



W. Montgomery 425. E.C. Helfrich to Co. N. Prank. Pt. Lots 4-5 B-40, P.A. O.C.S. 136 ft N 1/2 rods N. 18 W. cor. Lot 5 S 37 1/2 ft. E. 10 rods N 37 1/2 ft W. 10 rods to beg

Mayor of Ogden City, to A.J. Shape. Prq. at N.W. Cor. Lot 5 B-40 P.A. O.C.S. E. 8 rods N 4 rods E. 8 rods S 12 1/2 rods W. 16 rods N 8 1/2 rods to beg.



F.T. Sanford to Eliza Mass, Pt. N.W. 1/4 Sec. 5 T. 5. N. R. 1. W. Beg. 13.61 chs. N. 4 32.50 ch W. and 40 100 ch. N 5° E. of S.E. Cor. sd 1/4 Sec. N. 5° E 2.30 ch. N. 73° W. 5.03 ch S 15 1/2° W. 4.0 ch. S 86° W. 2.05 ch S 2 1/2° W. 2.81 ch. E. 6.98 ch. to beg

the above traverses correctly, excepting last call, which figures, East, 6.99 chs to beg. correct, the S.W. Cor. of above is 913.66 ft. N. 0° 27' E. on sec. line 7 81 ft E. of S.W. Cor. sd 1/4 Sec.